



QCA Spas
"A Step Ahead Since 1966"

LIFE IS BETTER IN A QCA SPA



A STEP AHEAD SINCE 1966

TABLE OF CONTENTS

PAGE 3
Introduction
to QCA Spas

PAGE 4,5
Majestic Spa Series
Spa Model Introduction

PAGE 6
Pulse Massage

PAGE 7,8
Majestic Spa Series
Gemstone Deluxe PM
and Moonstone PM
Feature Sheets

PAGE 9
Wavemax™
Ultra Wave Lounge™

PAGE 10-13
Majestic Spa Series
GT500, Paradise Island
XLP, Paradise Supreme
XLP, and Paradise Ultra
XLP Feature Sheets

PAGE 14
Spa Touch™ 3 Controller

PAGE 15,16
Performance Spa Series
Spa Model Introduction

PAGE 17
ControlMySpa™

PAGE 18-25
Performance Spa Series
Antigua, Aquamarine, GL 5

GL6, E550, E650, Gemstone
Deluxe, and Moonstone
Features Sheets

PAGE 26,27
Star Spa Series
Spa Model Introduction

PAGE 28-35
Star Spa Series PNP 3, PNP 4,
GL3, GL4, SP1, SP2, SP5, and
SP6 Feature Sheets

PAGE 36
QCA Spas Shell Colors,
Cabinet Color Selections,
and Jet Styles

PAGE 37
QCA Spas Comparison Chart
and Warranty Information

PAGE 38,39
QCA Spas Features

PAGE 40
Optional Upgrades

PAGE 41
VibraSound™

PAGE 42
Chromazone™

PAGE 43
Spa Lighting Packages



THE LEADERS IN TECHNOLOGY SINCE 1966

Proudly made in the U.S.A. and with decades of experience, QCA Spas are engineered to enhance your quality of life. We build a spa with your busy life in mind. After a hectic day, soaking in the warm, healing waters of a QCA Spa will transport you into a state of tranquility.

QCA Spas are known for quality, innovation, and service. Every spa goes through a rigorous 50-point quality inspection. ***QCA builds a spa to last so you can relax and enjoy it for years to come!***

We strive to exceed the expectations of our customers and their quality of ownership. Many of the features available on our spas are exclusive to QCA Spas. As a leader in spa technology, we have developed the most sophisticated patented hydrotherapy seats and systems in the industry. The Wave Max Seat™, Ultra Wave Lounge™ and the Hydro Max Seat are all ***patented hydrotherapy seats only available through QCA Spas.***

QCA Spas's jets are placed in specific patterns to target muscle groups throughout the body. Our high flow pumps give you the ability to sit in front of the jets longer and allows the jet pressure to go deep into targeted muscle groups. This begins the process of healing muscles, increasing flexibility, improving blood flow and helps you let go of the tension of the day and get a great night's sleep! ***QCA's patented hydrotherapy systems truly restores, rejuvenates and renews the mind, body and soul.***

A woman is seen from the back, relaxing in a hot tub. The water is bubbling, and the hot tub's interior is white with several jets. The 'Majestic' logo is prominently displayed in the upper center of the image.

Majestic

SERIES

**OUR TOP-OF-THE-LINE, MOST LUXURIOUS AND HIGH-QUALITY SPA SERIES.
THESE SPAS COME WITH AMAZING FEATURES AND OPTIONAL UPGRADES. THEY ARE BUILT
TO LAST FOR YEARS FOR YOUR ENJOYMENT AND TO IMPROVE YOUR HEALTH AND LIFESTYLE.**

PARADISE SUPREME XLP



GT500



GEMSTONE DELUXE PM



PARADISE ULTRA XLP



PARADISE ISLAND XLP



MOONSTONE PM



PUT THE POWER OF PULSE MASSAGE AT YOUR FINGERTIPS!



AVAILABLE ON SELECT MODELS ONLY



RELAX. INVIGORATE. STIMULATE. REJUVINATE.



State-of-the-art 3 button panel with LED light. VariMax™ controls come standard with the Pulse Massage option. You can choose from 2 power settings for an optimal massage, have a less intense or more intense massage **all at the touch of a button!**

The VariMax™ Pump Powerful. Compact. Proven Reliability.

The VariMax™ pump with Pulse Massage will provide a full body massage that will make you feel as though you have your own personal massage therapist. The VariMax™ pump allows you to **create your own hydrotherapy options with a simple push of a button.** You can enjoy water movement that is gentle or firm by increasing or decreasing the intensity of the sensation.

There are so many things in life that are out of your control, but your massage experience doesn't have to be one of them. Start your day with an invigorating massage or end your day with a soothing water sensation with a VariMax™ pump with Pulse Massage. **It's your choice!**

"So quiet
you'll ask if it is running"



Pump Specs:
Voltage: 230V/60Hz
Current: 7.6A
HP: 2.0

GEMSTONE DELUXE PM



SPECIFICATIONS

- 84" L x 84" W x 40" D
- 3 Air Controls
- (2) 5.2 BHP 2-Speed Hi-Flow Pumps
- (1) 3.5 BHP Varimax™ Pump
- 5.5 KW Heater
- Majestic Light Package
- 220 Volt System
- QCA Ozone System
- 360 Gallons
- 45 Sq. Ft. Filter



FEATURES

- 6 - 7 Person Non-Lounger Spa with Pulse Massage
- Pulse Massage Chair
- 63 Therapeutic Stainless Steel Jets
- 2 Captain's Chairs and Soft Pillows
- Tactile Jetted Foot Massage Dome
- Dual Adjustable Collar Jets
- Dual Adjustable Cascading Waterfall
- Patented Dura-Bond™ Acrylic Shell
- Weather Guard™ Maintenance-Free Cabinet
- Automatic Filtration Cycle and Built-In Filter
- Energy Saver System

UPGRADES

- VibraSound™ Spa Sound System
- Blu Fusion Bromine System
- Wavezone™ UV Sanitation System
- Control My Spa™



Comes with Balboa
SpaTouch™ 3 Topsiside Control



PLEASE NOTE: Shell colors, jet styles and configurations may vary from the photos shown above. We reserve the right to make changes to the jets, color, and specifications of the spas without notice.



MOONSTONE PM

Majestic
SERIES



SPECIFICATIONS

- 92" L x 92" W x 40" D
- 3 Air Controls
- (2) 5.2 BHP 2-Speed Hi-Flow Pumps
- (1) 3.5 BHP Varimax™ Pump
- 5.5 KW Heater
- Majestic Light Package
- 220 Volt System
- QCA Ozone System
- 465 Gallons
- 100 Sq. Ft. Filter



FEATURES

- 6 - 7 Person Non-Lounger Spa with Pulse Massage™
- Pulse Massage™ Chair
- 66 Therapeutic Stainless Steel Jets
- 2 Captain's Chairs and Soft Pillows
- Tactile Foot Massage Dome
- Dual Adjustable Collar Jets
- Dual Adjustable Cascading Waterfall
- Patented Dura-Bond™ Acrylic Shell
- Weather Guard™ Maintenance-Free Cabinet
- Automatic Filtration Cycle and Built-In Filter
- Energy Saver System

UPGRADES

- VibraSound™ Spa Sound System
- Blu Fusion Bromine System
- Wavezone™ UV Sanitation System
- Control My Spa™



Comes with Balboa
SpaTouch™ 3 Topside Control

RIDE THE WAVE OF RELAXATION



WAVEMAX™ HYDROTHERAPY SEAT



The Wavemax™ seat has 20 jets that stair-step five gentle streams of water, one row at a time, up and down your back - giving the sensation of gentle fingers massaging those aching, tired muscles. These invigorating streams may be paused at any level to continuously massage one part of your back or programmed to perform seven different massage patterns at three variable speeds.

Our electronic control pad allows you to customize your Wavemax™ massage at the touch of a button. Choose from seven jet patterns at three different speeds even pause in the middle of a cycle to concentrate the jets in areas of your back which may need extra-special attention!

The 54 jets of the Ultra-Wave Lounge™ provide a pulsating wave massage one or two rows at a time from your neck to your toes. Seven function programmable controls with pause feature provides different massage patterns at three variable speeds over your body.



GT500



SPECIFICATIONS

- 87" L x 87" W x 40" D
- Dual Air Controls
- (2) 5.2 BHP 2-Speed Hi-Flow Pumps
- Ultra Wave Lounge™ with 52 Jets, 3 Speeds, and 7 Preset Patterns
- 5.5 KW Heater
- Majestic Light Package
- 220 Volt System
- QCA Ozone System
- 410 Gallons
- 50 Sq. Ft. Filter



FEATURES

- 6 Person Lounger Spa with Walk-in Steps
- 88 Therapeutic Stainless Steel Jets
- Tactile Jetted Foot Massage Dome
- Dual Adjustable Collar Jets
- Dual Adjustable Cascading Waterfall
- Soft Pillows
- Patented Dura-Bond™ Acrylic Shell
- Weather Guard™ Maintenance-Free Cabinet
- Automatic Filtration Cycle and Built-In Filter
- Energy Saver System

UPGRADES

- VibraSound™ Spa Sound System
- Blu Fusion Bromine System
- Wavezone™ UV Sanitation System
- Control My Spa™



Comes with Balboa
SpaTouch™ 3 Topside Control



PLEASE NOTE: Shell colors, jet styles and configurations may vary from the photos shown above. We reserve the right to make changes to the jets, color, and specifications of the spas without notice.



PARADISE ISLAND XLP



SPECIFICATIONS

- 84" L x 84" W x 40" D
- (3) 5.2 BHP 2-Speed Hi-Flow Pumps
- 3 Air Controls
- 5.5 KW Heater
- Majestic Light Package
- 220 Volt System
- QCA Ozone System
- 360 Gallons
- 100 Sq. Ft. Filter



FEATURES

- 6 Person Non-Lounger Spa with Walk-in Steps
- 72 Therapeutic Stainless Steel Jets
- Tactile Volcano-Jet Foot Massage Dome
- Dual Adjustable Collar Jets
- 2 Captain's Chairs
- Patented Wavemax™ Seat
- Adjustable Cascading Waterfall
- Soft Pillows
- Patented Dura-Bond™ Acrylic Shell
- Weather Guard™ Maintenance-Free Cabinet
- Automatic Filtration Cycle and Built-In Filter
- Energy Saver System

UPGRADES

- VibraSound™ Spa Sound System
- Blu Fusion Bromine System
- Wavezone™ UV Sanitation System
- Control My Spa™



Comes with Balboa
SpaTouch™ 3 Topside Control



PLEASE NOTE: Shell colors, jet styles and configurations may vary from the photos shown above. We reserve the right to make changes to the jets, color, and specifications of the spas without notice.



PARADISE SUPREME XLP



SPECIFICATIONS

- 92"L x 92"W x 40"D
- (3) 5.2 BHP 2-Speed Hi-Flow Pumps
- 3 Air Controls
- Patented Wavemax™ Seat
- HydroMax Seat
- 5.5 KW Heater
- Majestic Light Package
- 220 Volt System
- QCA Ozone System
- 465 Gallons
- 100 Sq. Ft. Filter



FEATURES

- 8 Person Non-Lounger Spa with Walk-in Steps
- 101 Therapeutic Stainless Steel Jets
- Tactile Multi-Jet Foot Massage Dome
- Dual Adjustable Collar Jets
- Adjustable Cascading Waterfall and 2 Fountains
- 2 Captain's Chairs and Soft Pillows
- Patented Dura-Bond™ Acrylic Shell
- Weather Guard™ Maintenance-Free Cabinet
- Automatic Filtration Cycle and Built-In Filter
- Energy Saver System

UPGRADES

- VibraSound™ Spa Sound System
- Blu Fusion Bromine System
- Wavezone™ UV Sanitation System
- Control My Spa™



Comes with Balboa
SpaTouch™ 3 Topside Control

PARADISE ULTRA XLP

Majestic
SERIES



SPECIFICATIONS

- 87" L x 87" W x 40" D
- (3) 5.2 BHP 2-Speed Hi-Flow Pumps
- 3 Air Controls
- Ultra Wave Lounge™ with 52 Jets, 3 Speeds, and 7 Preset Patterns
- Patented Wavemax™ Seat
- HydroMax™ Seat
- 5.5 KW Heater
- Majestic Light Package
- 220 Volt System
- QCA Ozone System
- 410 Gallons
- 50 Sq. Ft. Filter

WAVEMAX™

ULTRA WAVE
LOUNGE™

FEATURES

- 6 Person Lounger Spa with Walk-in Steps
- 110 Therapeutic Stainless Steel Jets
- Tactile Jetted Foot Massage Dome
- Dual Adjustable Collar Jets
- Adjustable Cascading Waterfall
- Soft Pillows
- Patented Dura-Bond™ Acrylic Shell
- Weather Guard™ Maintenance-Free Cabinet
- Automatic Filtration Cycle and Built-In Filter
- Energy Saver System

UPGRADES

- VibraSound™ Spa Sound System
- Blu Fusion Bromine System
- Wavezone™ UV Sanitation System
- Control My Spa™



Comes with Balboa
SpaTouch™ 3 Topside Control



PLEASE NOTE: Shell colors, jet styles and configurations may vary from the photos shown above. We reserve the right to make changes to the jets, color, and specifications of the spas without notice.





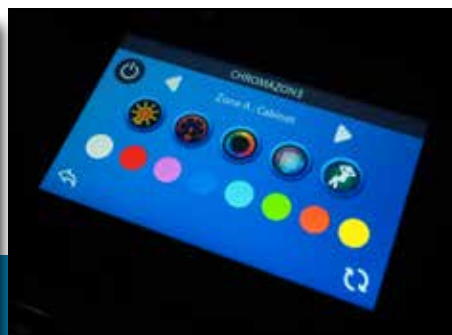
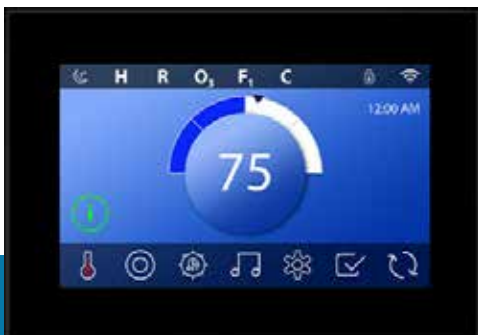
spaTouch™ 3

BEST IN CLASS
BIGGER. BRIGHTER. BOLDER.



FEATURES:

- Vibrant screen display
- Impervious to environmental conditions such as water splashes, impervious to water
- New, bigger, brighter & bolder menu
- The touchscreen incorporates the latest touch technology with capacitive touch
- Provides stunning clarity and a premium true color display





**THE PERFORMANCE SERIES OFFERS POWERFUL,
QUALITY HOT TUBS FOR YEARS OF ENJOYMENT AND
TO IMPROVE YOUR HEALTH AND LIFESTYLE.**



GEMSTONE DELUXE



E550



GL5



ANTIGUA



MOONSTONE



E650



GL6



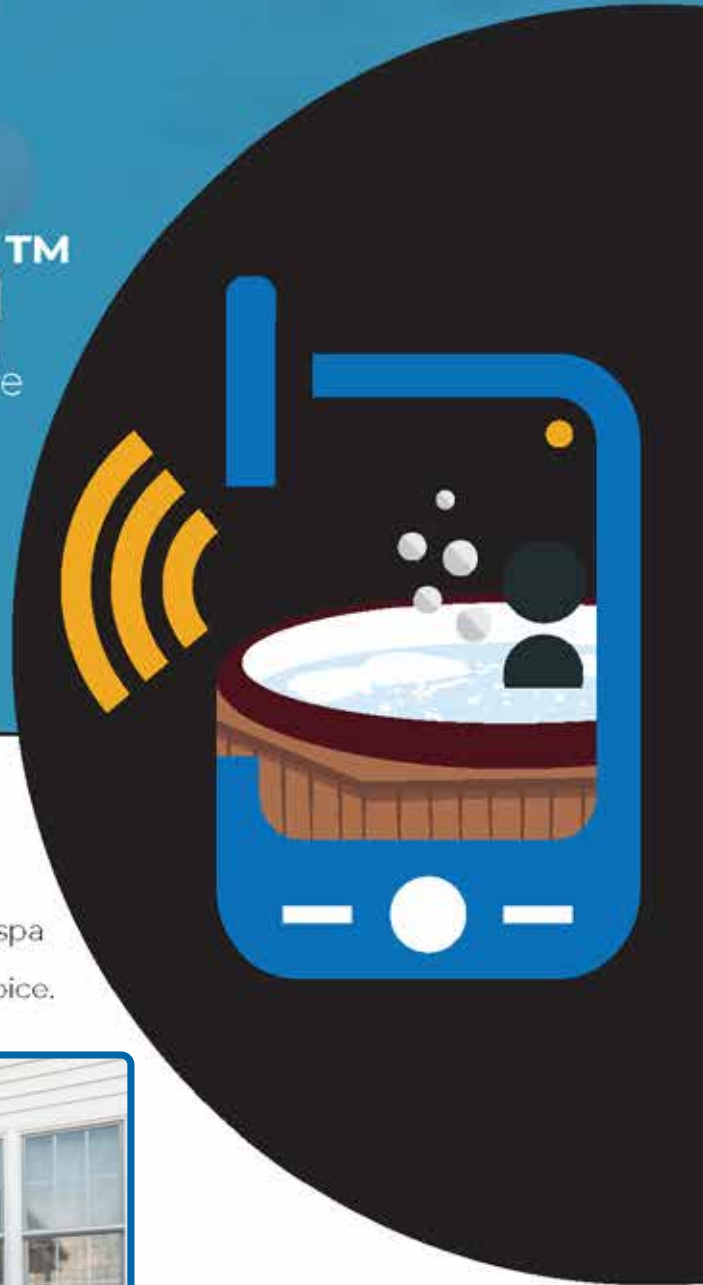
AQUAMARINE





ControlMySpa™

ControlMySpa™ works with Hey Google



HANDS-FREE CONTROL

ControlMySpa™ hot tubs work with Hey Google to help you turn on the lights, see what the temperature of the spa is or what the status of the heater is just by using your voice.



ANTIGUA



SPECIFICATIONS

- 84" L x 67" W x 36" D
- (2) 5.2 BHP 2-Speed Hi-Flow Pumps
- Dual Air Controls
- 5.5 KW Heater
- Performance Light Package
- 220 Volt System
- QCA Ozone System
- 240 Gallons
- 45 Sq. Ft. Filter

FEATURES

- 3 Person Rectangular Lounger Spa
- 32 Therapeutic Stainless Steel Jets
- Adjustable Cascading Waterfall
- Soft Pillows
- Patented Dura-Bond™ Acrylic Shell
- Weather Guard™ Maintenance-Free Cabinet
- Automatic Filtration Cycle and Built-In Filter
- Energy Saver System

UPGRADES

- VibraSound™ Spa Sound System
- Blu Fusion Bromine System
- Wavezone™ UV Sanitation System
- Control My Spa™
- SpaTouch™ 3
- Majestic Light Package



**Comes with Balboa TP500s
Topside Control**

AQUAMARINE



SPECIFICATIONS

- 72" L x 84" W x 36" D
- (2) 5.2 BHP 2-Speed Hi-Flow Pumps
- Dual Air Controls
- 5.5 KW Heater
- Performance Light Package
- 220 Volt System
- QCA Ozone System
- 240 Gallons
- 45 Sq. Ft. Filter

FEATURES

- 5-6 Person Rectangular Lounger Spa
- 40 Therapeutic Stainless Steel Jets
- Soft Pillows
- Patented Dura-Bond™ Acrylic Shell
- Weather Guard™ Maintenance-Free Cabinet
- Automatic Filtration Cycle and Built-In Filter
- Energy Saver System

UPGRADES

- VibraSound™ Spa Sound System
- Blu Fusion Bromine System
- Wavezone™ UV Sanitation System
- Control My Spa™
- SpaTouch™ 3
- Majestic Light Package



**Comes with Balboa TP500s
Topside Control**



PLEASE NOTE: Shell colors, jet styles and configurations may vary from the photos shown above. We reserve the right to make changes to the jets, color, and specifications of the spas without notice.



GL5



SPECIFICATIONS

- 78"L x 78"W x 36"D
- (2) 5.2 BHP 2-Speed Hi-Flow Pumps
- Dual Air Controls
- 5.5 KW Heater
- Performance Light Package
- 220 Volt System
- QCA Ozone System
- 310 Gallons
- 45 Sq. Ft. Filter

FEATURES

- 5 Person Lounger Spa
- 34 Therapeutic Stainless Steel Jets
- Integrated Headrests
- 2 Captain's Chairs
- Adjustable Cascading Waterfall
- Patented Dura-Bond™ Acrylic Shell
- Dual Adjustable Collar Jets
- Foot Jets
- Weather Guard™ Maintenance-Free Cabinet
- Automatic Filtration Cycle and Built-In Filter
- Energy Saver System

UPGRADES

- VibraSound™ Spa Sound System
- Blu Fusion Bromine System
- Wavezone™ UV Sanitation System
- Control My Spa™
- SpaTouch™ 3
- Majestic Light Package



Comes with Balboa TP500s
Topside Control

GL6



SPECIFICATIONS

- 78" L x 78" W x 38" D
- (2) 5.2 BHP 2-Speed Hi-Flow Pumps
- Dual Air Controls
- 5.5 KW Heater
- Performance Light Package
- 220 Volt System
- QCA Ozone System
- 290 Gallons
- 45 Sq. Ft. Filter

FEATURES

- 6 Person Non-Lounger Spa
- 32 Therapeutic Stainless Steel Jets
- Molded Headrests
- Patented Dura-Bond™ Acrylic Shell
- Cascading Waterfall (Adjustable)
- Captain's Chair
- Dual Adjustable Collar Jets
- Weather Guard™ Maintenance-Free Cabinet
- Automatic Filtration Cycle and Built-In Filter
- Energy Saver System

UPGRADES

- VibraSound™ Spa Sound System
- Blu Fusion Bromine System
- Wavezone™ UV Sanitation System
- Control My Spa™
- SpaTouch™ 3
- Majestic Light Package



Comes with Balboa TP500s
Topside Control



PLEASE NOTE: Shell colors, jet styles and configurations may vary from the photos shown above. We reserve the right to make changes to the jets, color, and specifications of the spas without notice.



E550



SPECIFICATIONS

- 85"L x 85"W x 40"D
- (2) 5.2 BHP 2-Speed Hi-Flow Pumps
- Dual Air Controls
- 5.5 KW Heater
- Performance Light Package
- 220 Volt System
- QCA Ozone System
- 365 Gallons
- 45 Sq. Ft. Filter

FEATURES

- 5-6 Person Lounger Spa
- 45 Therapeutic Stainless Steel Jets
- Integrated Headrests
- Captain's Chair
- Patented Dura-Bond™ Acrylic Shell
- Adjustable Cascading Waterfall
- Dual Adjustable Collar Jets
- Weather Guard™ Maintenance-Free Cabinet
- Automatic Filtration Cycle and Built-In Filter
- Energy Saver System

UPGRADES

- VibraSound™ Spa Sound System
- Blu Fusion Bromine System
- Wavezone™ UV Sanitation System
- Control My Spa™
- SpaTouch™ 3
- Majestic Light Package



Comes with Balboa TP500s
Topside Control

E650



SPECIFICATIONS

- 85" L x 85" W x 40" D
- (2) 5.2 BHP 2-Speed Hi-Flow Pumps
- Dual Air Controls
- 5.5 KW Heater
- Performance Light Package
- 220 Volt System
- QCA Ozone System
- 330 Gallons
- 45 Sq. Ft. Filter

FEATURES

- 6 Person Non-Lounger Spa
- 44 Therapeutic Stainless Steel Jets
- Integrated Headrests
- 2 Captain's Chairs
- Patented Dura-Bond™ Acrylic Shell
- Adjustable Cascading Waterfall
- Dual Adjustable Collar Jets
- Weather Guard™ Maintenance-Free Cabinet
- Automatic Filtration Cycle and Built-In Filter
- Energy Saver System

UPGRADES

- VibraSound™ Spa Sound System
- Blu Fusion Bromine System
- Wavezone™ UV Sanitation System
- Control My Spa™
- SpaTouch™ 3
- Majestic Light Package



Comes with Balboa TP500s
Topside Control

GEMSTONE DELUXE



SPECIFICATIONS

- 84"L x 84"W x 40"D
- (2) 5.2 BHP 2-Speed Hi-Flow Pumps
- Dual Air Controls
- 5.5 KW Heater
- Performance Light Package
- 220 Volt System
- QCA Ozone System
- 385 Gallons
- 45 Sq. Ft. Filter

FEATURES

- 6-7 Person Non-Lounger Spa
- 59 Therapeutic Stainless Steel Jets
- Soft Pillows
- 2 Captain's Chairs
- Tactile Volcano-Jet Foot Massage Dome
- Patented Dura-Bond™ Acrylic Shell
- Adjustable Cascading Waterfall
- Dual Adjustable Collar Jets
- Weather Guard™ Maintenance-Free Cabinet
- Automatic Filtration Cycle and Built-In Filter
- Energy Saver System

UPGRADES

- VibraSound™ Spa Sound System
- Blu Fusion Bromine System
- Wavezone™ UV Sanitation System
- Control My Spa™
- SpaTouch™ 3
- Majestic Light Package



**Comes with Balboa TP500s
Topside Control**

MOONSTONE



SPECIFICATIONS

- 92" L x 92" W x 40" D
- (2) 5.2 BHP 2-Speed Hi-Flow Pumps
- Dual Air Controls
- 5.5 KW Heater
- Performance Light Package
- 220 Volt System
- QCA Ozone System
- 465 Gallons
- 100 Sq. Ft. Filter

FEATURES

- 8 Person Non-Lounger Spa with Walk-in Steps
- 63 Therapeutic Stainless Steel Jets
- Adjustable Cascading Waterfall
- Patented Dura-Bond™ Acrylic Shell
- Dual Adjustable Collar Jets
- Weather Guard™ Maintenance-Free Cabinet
- 2 Captain's Chairs
- Jetted Tactile Foot Massage Dome
- Soft Pillows
- Automatic Filtration Cycle and Built-In Filter
- Energy Saver System

UPGRADES

- VibraSound™ Spa Sound System
- Blu Fusion Bromine System
- Wavezone™ UV Sanitation System
- Control My Spa™
- SpaTouch™ 3
- Majestic Light Package



Comes with Balboa TP500s
Topside Control



PLEASE NOTE: Shell colors, jet styles and configurations may vary from the photos shown above. We reserve the right to make changes to the jets, color, and specifications of the spas without notice.



Star

SERIES

**THE STAR SERIES OFFERS UNEQUAL VALUE
QUALITY HOT TUBS FOR YEARS OF ENJOYMENT!**



PNP3



GL3



SP1



SP5



PNP4



GL4



SP2



SP6



MODEL PNP 3



SPECIFICATIONS

- 78"L x 60"W x 34"D
- (1) 1.5 BHP Hi-Flow Pump
- Air Control
- 1 KW Heater
- Star Light Package
- 110 Volt Plug & Play System
- QCA Ozone System
- 200 Gallons
- 45 Sq. Ft. Filter

FEATURES

- 3 Person Lounger Spa
- 18 Therapeutic Stainless Steel Jets
- Molded Headrests
- Patented Dura-Bond™ Acrylic Shell
- Weather Guard™ Maintenance-Free Cabinet
- Automatic Filtration Cycle and Built-In Filter
- Energy Saver System



**Comes with Balboa TP260
Topside Control**

MODEL PNP 4



SPECIFICATIONS

- 78" L x 68" W x 32" D
- (1) 1.5 BHP Hi-Flow Pump
- Air Control
- 1 KW Heater
- Star Light Package
- 110 Volt Plug & Play System
- QCA Ozone System
- 220 Gallons
- 45 Sq. Ft. Filter

FEATURES

- 4 Person Non-Lounger Spa
- 17 Therapeutic Stainless Steel Jets
- Molded Headrests
- Patented Dura-Bond™ Acrylic Shell
- Weather Guard™ Maintenance-Free Cabinet
- Automatic Filtration Cycle and Built-In Filter
- Energy Saver System



**Comes with Balboa TP260
Topside Control**

MODEL GL3



SPECIFICATIONS

- 78"L x 60"W x 34"D
- (1) 5.2 BHP Hi-Flow Pump
- Air Control
- 4 KW Heater
- Star Light Package
- 220 Volt System
- QCA Ozone System
- 200 Gallons
- 45 Sq. Ft. Filter

FEATURES

- 3 Person Non-Lounger Spa
- 20 Therapeutic Stainless Steel Jets
- Molded Headrests
- Patented Dura-Bond™ Acrylic Shell
- Dual Adjustable Collar Jets
- Adjustable Cascading Waterfall
- Weather Guard™ Maintenance-Free Cabinet
- Automatic Filtration Cycle and Built-In Filter
- Energy Saver System



**Comes with Balboa TP260
Topside Control**

MODEL GL4



SPECIFICATIONS

- 78"L x 68"W x 32"D
- (1) 5.2 BHP Hi-Flow Pump
- Air Control
- 4 KW Heater
- Star Light Package
- 220 Volt System
- Ozone System
- 220 Gallons
- 45 Sq. Ft. Filter

FEATURES

- 4 Person Non-Lounger Spa
- 23 Therapeutic Stainless Steel Jets
- Molded Headrests
- Patented Dura-Bond™ Acrylic Shell
- Dual Adjustable Collar Jets
- Adjustable Cascading Waterfall
- Weather Guard™ Maintenance-Free Cabinet
- Automatic Filtration Cycle and Built-In Filter
- Soft Touch™ Controls
- Energy Saver System



Comes with Balboa TP260
Topside Control

MODEL SP1



SPECIFICATIONS

- 84" L x 67" W x 36" D
- (1) 5.2 BHP Hi-Flow Pump
- Air Control
- 4 KW Heater
- Star Light Package
- 220 Volt System
- QCA Ozone System
- 240 Gallons
- 45 Sq. Ft. Filter

FEATURES

- 3 Person Rectangular Lounger Spa
- 20 Therapeutic Stainless Steel Jets
- Soft Pillows
- Patented Dura-Bond™ Acrylic Shell
- Adjustable Cascading Waterfall
- Weather Guard™ Maintenance-Free Cabinet
- Automatic Filtration Cycle and Built-In Filter
- Soft Touch™ Controls
- Energy Saver System



**Comes with Balboa TP260
Topside Control**

MODEL SP2



SPECIFICATIONS

- 72"L x 84"W x 36"D
- (1) 5.2 BHP Hi-Flow Pump
- Air Control
- 4 KW Heater
- Star Light Package
- 220 Volt System
- QCA Ozone System
- 250 Gallons
- 45 Sq. Ft. Filter

FEATURES

- 4 Person Rectangular Lounger Spa
- 27 Therapeutic Stainless Steel Jets
- Soft Pillows
- Patented Dura-Bond™ Acrylic Shell
- Weather Guard™ Maintenance-Free Cabinet
- Automatic Filtration Cycle and Built-In Filter
- Energy Saver System



**Comes with Balboa TP260
Topside Control**

MODEL SP5



SPECIFICATIONS

- 78"L x 78"W x 36"D
- (1) 5.2 BHP Hi-Flow Pump
- Air Control
- 4 KW Heater
- Star Light Package
- 220 Volt System
- QCA Ozone System
- 310 Gallons
- 45 Sq. Ft. Filter

FEATURES

- 5 Person Lounger Spa
- 29 Therapeutic Stainless Steel Jets
- Molded Headrests
- Patented Dura-Bond™ Acrylic Shell
- Dual Adjustable Collar Jets
- 2 Captain's Chairs
- Adjustable Cascading Waterfall
- Weather Guard™ Maintenance-Free Cabinet
- Automatic Filtration Cycle and Built-In Filter
- Soft Touch™ Controls
- Energy Saver System



Comes with Balboa TP260
Topside Control

MODEL SP6



SPECIFICATIONS

- 78"L x 78"W x 38"D
- (1) 5.2 BHP Hi-Flow Pump
- Air Control
- 4 KW Heater
- Star Light Package
- 220 Volt System
- QCA Ozone System
- 290 Gallons
- 45 Sq. Ft. Filter

FEATURES

- 6 Person Non-Lounger Spa
- 30 Therapeutic Stainless Steel Jets
- Molded Headrests
- Patented Dura-Bond™ Acrylic Shell
- Dual Adjustable Collar Jets
- Captain's Chair
- Adjustable Cascading Waterfall
- Weather Guard™ Maintenance-Free Cabinet
- Automatic Filtration Cycle and Built-In Filter
- Soft Touch™ Controls
- Energy Saver System



**Comes with Balboa TP260
Topside Control**

QCA SPAS COLOR SELECTIONS

CABINET COLORS



GRAY



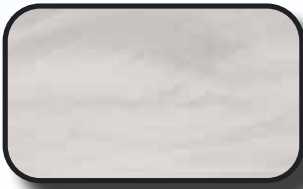
***MAHOGANY**

***WHILE SUPPLIES LAST**



CHESTNUT

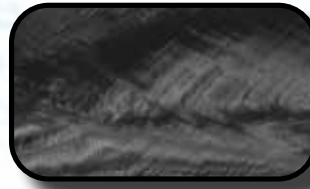
SPA SHELL COLORS & SPA COVER COLOR



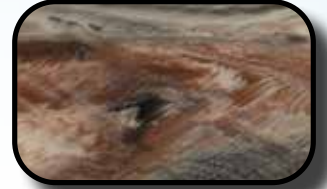
SILVER MARBLE



MIDNIGHT CANYON



STORM CLOUDS



TUSCAN SUN



CHARCOAL COLOR COVER

ALL HARD COVERS ARE 4"X 2" OR 5"X 3" FOR ALL SPA SERIES

JET STYLES

Designed and built exclusively for QCA Spas, jets are positioned for optimum performance. Settings range from power surge, which creates a lively swirling action to a high-power flow narrow which delivers a narrow stream for more intense therapy targeting specific areas of your body.



PLEASE NOTE: Shell, cabinet and cover colors may vary from colors shown above. We reserve the right to make changes to the jets, color, and specifications of the spas without notice.

QCA SPAS COMPARISON CHART

QCA SPAS FEATURES	MAJESTIC SERIES	PERFORMANCE SERIES	STAR SERIES
STAINLESS STEEL JETS	X	X	X
SHUT OFF VALVES	X	X	X
SHELL FOAM INSULATION	X	X	X
REFLECTIVE THERMO WRAP	X	X	X
ENERGY SAVER SYSTEM	X	X	X
WATERFALL(S) / FOUNTAIN *	X	X	X
COLLAR JETS *	X	X	X
JETTED FOOT MASSAGE DOME *	X	X	
TACTILE FOOT MASSAGE DOME *		X	X
[1] 2-SPEED HI-FLOW PUMP *			X
QCA OZONE SYSTEM	X	X	X
[2] 5.2 BHP 2-SPEED HI-FLOW PUMPS *		X	X
[3] 5.2 HP HI-FLOW 2-SPEED PUMPS	X		
WAVEMAX™ SEAT / HYDROMAX SEAT	X		
ULTRA WAVE LOUNGE™	X		

* SELECT MODELS

QCA SPAS WARRANTY INFORMATION



MAJESTIC WARRANTY:

SHELL: 7 YEARS
 SHELL SURFACE: 7 YEARS
 ELECTRICAL EQUIPMENT: 5 YEARS
 PLUMBING: 5 YEARS
 PATIO PERFORMANCE COVER: 1 YEAR
 WEATHER GUARD™ CABINET: 1 YEAR
 LIGHTING, STEREO, AND OZONE SYSTEMS: 1 YEAR



PERFORMANCE WARRANTY:

SHELL: 7 YEARS
 SHELL SURFACE: 7 YEARS
 ELECTRICAL EQUIPMENT: 5 YEARS
 PLUMBING: 5 YEARS
 PATIO PERFORMANCE COVER: 1 YEAR
 WEATHER GUARD™ CABINET: 1 YEAR
 LIGHTING, STEREO, AND OZONE SYSTEMS: 1 YEAR



STAR WARRANTY:

SHELL: 5 YEARS
 SHELL SURFACE: 5 YEARS
 ELECTRICAL EQUIPMENT: 3 YEARS
 PLUMBING: 3 YEARS
 PATIO PERFORMANCE COVER: 1 YEAR
 WEATHER GUARD™ CABINET: 1 YEAR
 LIGHTING, STEREO, AND OZONE SYSTEMS: 1 YEAR

DISCLAIMER: QCA SPAS, INC. RESERVES THE RIGHT TO MAKE CHANGES TO THE SPAS AT ANY TIME WITHOUT NOTICE. THIS INCLUDES CHANGES IN JET CONFIGURATIONS, JET STYLE, SHELL COLOR, DESIGN, SPECIFICATIONS, CABINETS AND EQUIPMENT. DUE TO SUBTLE VARIATIONS IN THE ACRYLIC SHELL AND THE NATURE OF CONSTRUCTION, COLOR, ETC. MAY DEVIATE SLIGHTLY FROM THE LISTED SPECIFICATIONS. PRICE, AND AVAILABILITY MAY BE SUBJECT TO CHANGE AT ANY TIME WITHOUT NOTICE.

QCA SPAS FEATURES

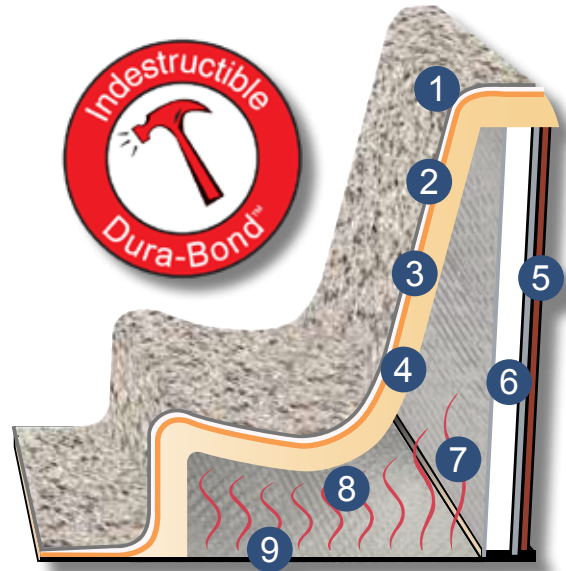
PATENTED DURA-BOND™



This multi-layered, patented strengthening process combines the beauty of Lucite Plus Acrylic™ with a layer of ABS for shell strength and integrity. Then a double strengthening material is applied. This high density material has all the strengthening properties of fiberglass without the environmental concerns.

SHELL STRENGTHENING SYSTEM

1. Acrylic Plus™
2. ABS
3. Dura-Bond™ with Foam Insulation
4. Polyethylene Foam
5. Maintenance-Free Weather Guard™ Cabinet
6. Polystyrene Insulation
7. Radiant Foil Insulation
8. Thermal Air Barrier
9. Moisture-Resistant Polyethylene Flooring



QCA'S OZONE SYSTEM

Ozone is a safe, convenient, low cost way to clean your spa water. It is a natural purifier that aids in eliminating bacteria, viruses, mold & mildew. It helps remove minerals while using fewer sanitizing water care products. All QCA Spas come equipped with the QCA's Ozone System Natural Water Sanitizing System.



ENERGY SAVER SYSTEM



Heat is generated by the spa's power equipment inside the cabinet. This heated air is captured and returned to the spas water. This continually helps maintain the water temperature without running the heater as often. This heat recovery system saves you money in electrical cost and helps save our planet.

QCA SPAS FEATURES

ELECTRONIC TOPSIDE SOFT TOUCH™ CONTROLS

These sleek panels have LCD graphical displays with function indicator icons, maintenance reminders and service alerts on the easy-to-read screen. It contains a heat and humidity resistant microprocessor and requires no programming, *just set it and forget it*. Overheat fault detection for runaway pumps, stuck relays and new software with color graphics.



Balboa TP500s Topside Control



Balboa TP260 Topside Control



Balboa SpaTouch™ 3
(OPTIONAL UPGRADE)
STANDARD ON MAJESTIC SERIES



ControlMySpa™
(OPTIONAL UPGRADE)

MAINTENANCE-FREE WEATHER GUARD™ CABINET



Weather Guard™ is the industry's best, maintenance-free spa cabinet. Weather Guard™ is fade resistant with built-in UV-inhibitors. Unlike other poly-plastic cabinets in the market today that are thin and flimsy resulting in warping and fading, a QCA Spa Weather Guard™ cabinet is constructed of strong and durable polystyrene that won't crack, splinter or peel. This material is similar to high-end vinyl windows for your home. And since it replaces the wood of most spa cabinets, Weather Guard™ is termite, moisture, and rot resistant and 214% more rigid than wood. Weather Guard™ is energy efficient too - 62% more than traditional wood!

OPTIONAL UPGRADES



GENESIS BLU FUSION BROMINE GENERATOR

Genesis **BLU FUSION** technology eliminates the dry skin, pungent chemical smell, and unsightliness of old tablet feeder systems. With **BLU FUSION**, there is no more hassle, just sparkling clean water.

This environmentally friendly Salt Water System automatically sanitizes the spa water and is a simple way to keep spa water clean, clear and sanitized. It conditions and sanitizes spa water and leaves the water feeling healthy, soft, and silky while using fewer water care products. The natural feel of the water also reduces dry, itchy skin. It simplifies water care and extends the life of the water before the need to drain and refill to one year saving time and money so you enjoy your spa more.



BALBOA WAVEZONE™



UV + OZONE SANITATION SYSTEM

The science of water treatment process using ozone and ultraviolet light! Disinfect your water naturally. Kills 99.9% of water borne pathogens. The same technology used in bottled drinking water plants, aquariums and hospitals. UV-C and ozone together generates cleaner, safer water naturally reducing the need for water care products.

- **WAVEZO3NE™ maximizes oxidation power**
- **WAVEZO3NE™ disinfects water by killing viruses and biological contaminants**
- **WAVEZO3NE™ reduces the use of chemical levels which means reducing the discomfort of skin and eye irritations**
- **WAVEZO3NE™ has low power consumption**
- **WAVEZO3NE™ has been designed & tested specially for Spa and Swim Spa Applications**
- **WAVEZO3NE™ is available in 240V, 50/60Hz**
- **WAVEZO3NE™ is UL/cUL approved**

TAKE YOUR TUB TO THE NEXT LEVEL.

A whole new kind of purification. Revolutionizing water care through advanced oxidation.





VibraSound™



THE VIBRASOUND™ SYSTEM ADDS MUSIC TO YOUR SPA SESSION. SIT BACK AND RELAX TO YOUR FAVORITE MUSIC!

With all the features of the VibraSound™ System in a compact design, the combined stereo system with sub-woofer also features an attached power supply for ultimate convenience. With 288 Watt total power, and Bluetooth supported by Halo Aerial Technology for an impressive range, *this waterproof stereo and marine sub-woofer makes a valuable and high-powered addition to your QCA Spa.*

- Stream music from your favorite device with support for Bluetooth Audio
- Built-In Crossovers automatically balanced speaker and sub-woofer outputs for perfect sound quality without the hassle
- Halo Aerial Technology boosts your Bluetooth signal for superior range in all directions
- The tuned ports are designed for superior sound quality and improved bass response without increasing the size of the device
- **PLAYS MUSIC WIRELESSLY VIA A BLUETOOTH® ENABLED DEVICE**
- **MARINE GRADE FOR USE IN DAMP ENVIRONMENT**
- **BUILT-IN 288W AMPLIFIER**
- **FEATURING AQUATIC AV® AND INFINITY® PRODUCTS**
- **2 WATERPROOF INFINITY® SPEAKERS**
- **1 POWERED SUB-WOOFER**



AQUATIC AV®
products with a watertight reputation

 **Bluetooth®**

 **Infinity**

LED LIGHTING TECHNOLOGY



CHROMAZON3™
Lighting Technology

NEW BALBOA CHROMAZON3™ SYSTEM FOR THE SPATOUCH 3™

LET IT WORK EXACTLY THE WAY YOU WANT IT. COMPLETE CONTROL. TAKE YOUR LIGHTING TO THE NEXT LEVEL AND EASILY MANAGE SINGLE COLORS OR LIGHT SHOW BRIGHTNESS.



CLEARLY BETTER DESIGN.

Balboa's chromazon3™ technology brings you the freedom to combine the speed of light with color transitions in a lightshow experience personalized just for you.



NAVIGATION MADE SIMPLE.

Easily move from one zone or group to the next. Better lighting simply makes for a better experience. Elevate your mood with stunning color groups and create zones to save all of your light settings.

LIGHTING PACKAGES



Light Up the Night

Lights add color and atmosphere and can greatly enhance the setting and enjoyment of your spa experience. QCA offers several lighting options. Choose from a complete package that will make your spa stand out as a focal point in your garden landscape. Our optional LED lights offer enchanting features including light patterns or remaining on your favorite color. Get the custom spa you want from one of the oldest spa manufacturers – QCA Spas.

Create the perfect mood with a high intensity LED spa lighting system featuring six brilliant LED colors. Surround yourself with full perimeter top shell and underwater LED lights that cycle at 3-second intervals. The system also includes a 5-inch LED light in the step that lights the entire body of water in the spa. With the touch of a button, you can pause on the color that suits your mood or surroundings. Touch the button again and create an exciting party mood where the lights change color in a quick, fast-paced motion.

SPA LIGHTING PACKAGES



At the touch of a button, you can make your water dance with intense magenta, orange, green, blue, and violet - or just allow the system to gradually move from one beautiful color to another. Transform the mood as you enjoy dramatic dances of changing colors - a spectacular light show whether in or out of the water!

**CABINET CORNER LIGHTING
WITH MAJESTIC AND
PERFORMANCE PACKAGE**



MAJESTIC PACKAGE: Top Waterline LED + Underwater LED + Main Light LED + Cabinet Corner Lighting: Features the new Balboa Chromazone™ system for the SpaTouch 3™. This is the ultimate in illumination for your hot tub. This complete package includes top waterline LED, underwater LED lighting, main LED light and cabinet down lighting. Enjoy colorful LED lights inside of the spa that you can control with the touch of a button.

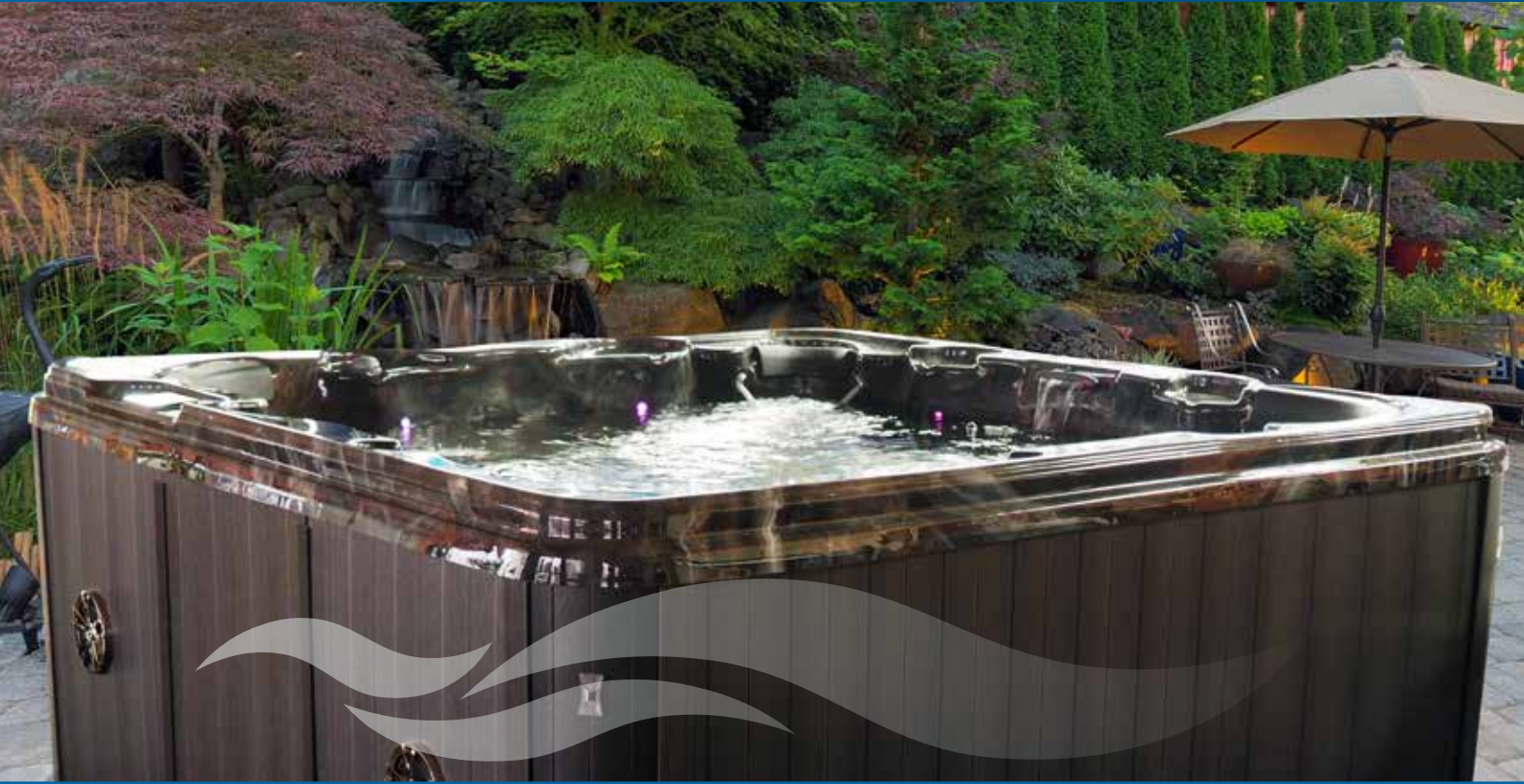
PERFORMANCE PACKAGE: Top Waterline LED + Main Light LED + Cabinet Corner Lighting: This package features top waterline LED lights, main underwater LED light and cabinet down lighting.

STAR PACKAGE: LED bulb for color changing fun to suit your moods. The bulb offers 12 Starburst light points.



MADE IN THE USA

QCA Spas are designed and tested with extremely thorough and exhaustive quality standards. Our components are recognized by third party organizations to be of the highest quality. QCA Spas is a value driven, people first company employing hard working men and women with Midwest values. We are located in Iowa and proud to be able to continue bringing you quality products built in the USA.



QCA Spas, Inc. | 1021 State Street | Bettendorf, IA
PH: 563.359.3558 | retail@qcaspas.com
www.qcaspas.com



Listed & Factory Pre-Tested

DISCLAIMER: QCA SPAS, INC. RESERVES THE RIGHT TO MAKE CHANGES TO THE SPAS AT ANY TIME WITHOUT NOTICE. THIS INCLUDES CHANGES IN JET CONFIGURATIONS, JET STYLE, SHELL COLOR, DESIGN, SPECIFICATIONS, CABINETRY AND EQUIPMENT. DUE TO SUBTLE VARIATIONS IN THE ACRYLIC SHELL AND THE NATURE OF CONSTRUCTION, COLOR, ETC. MAY DEVIATE SLIGHTLY FROM THE LISTED SPECIFICATIONS. PRICE, AND AVAILABILITY MAY BE SUBJECT TO CHANGE AT ANY TIME WITHOUT NOTICE.