

**MAKE
EVERY DAY A
VACATION**

Seasonal
SPECIALTY STORES®



QCA Spas
"A Step Ahead Since 1966"

Star
SERIES

Peridot
Spa Series

P
PERFORMANCE
series

Majestic
SERIES

Why Should You Choose QCA Spas?



Innovators In Spa Therapy Since 1966



The Benefits Of Hot Water Therapy

Hot water dilates the body's blood vessels which increases the flow of oxygen-rich blood to muscles and joints. Aches and pains will fade away, leaving you feeling relaxed.

Hot water therapy is excellent for:

- Arthritis, Bursitis, & Rheumatism
- Lower Back Pain
- Herniated Discs
- Muscle Spasms
- Soft Tissue Injury from Exercise
- Neck & Shoulder Pain
- Fibromyalgia

QCA Spas, Inc. has been recognized as one of the oldest spa companies in America. Since 1966, QCA Spas has strived to provide more hydrotherapy in their spas. QCA Spas is the innovator of the patented Wave-Max™ seat, the Hydro Max™ seat and the Ultra Wave™ Lounge. All QCA Spas have been tested and rated by Underwriters Laboratory for your safety and peace of mind. Most recently QCA Spas was featured as one of the top 25 spa companies by America's Top Hot Tubs & Spas magazine.



Seasonal
SPECIALTY STORES

An Excellent Aid To Fitness Routines



A QCA spa is much more than just relaxation. Performing simple exercises in your spa can become a very beneficial routine. Water from the jets provides a gentle, invigorating massage to joints and muscles. The pulsating action of the jets relieves knots and spasms in the muscles and tissues. The increased blood flow and elasticity of the muscle tissue allows for greater flexibility and a wider range of motion. Jump into your spa for a quick warm-up, or spend some time soaking after your workout to refresh your body.

Hydrotherapy is excellent for:

- Stretching & Breathing Exercises
- Warm Up/Cool Down to Exercise Routines
- Water Exercises
- Relieving Muscle Spasms, Aches, & Pains



Relaxation Has Never Been Better

Everything will fade away as soon as you slip into a QCA Spa. Our spas will submerge you in comfortable, contoured seats, surrounded by strategically placed jets for an ultimate experience in luxury. Put your mind and body at ease and treat yourself to the bubbling oasis of a hot tub. Owning a spa opens up a world of health benefits, and can even help you get a better night's rest. Don't carry the world on your shoulders, let QCA help your worries and stress fall aside.



Seasonal
SPECIALTY STORES

Enjoy Quality Family Time

If you have a family, bring them together with a QCA Spa. Escape from the frantic day-to-day activities to soak in the spa and enjoy each other's company. Your children will appreciate it, and so will you! The open seating of the spa allows space for everyone, and will suit your family no matter what age. Younger children can enjoy the whirling jets, and teens can have a hangout to socialize with friends. A QCA Spa is the perfect way to encourage more family time, and offer a setting that is both fun and relaxing.



Seasonal
SPECIALTY STORESSM

Create A Lifestyle That Suits You

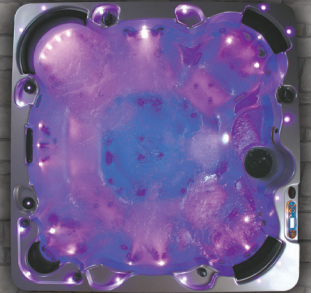
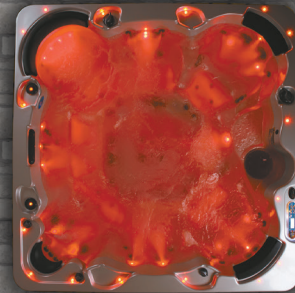
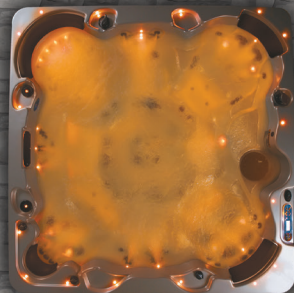
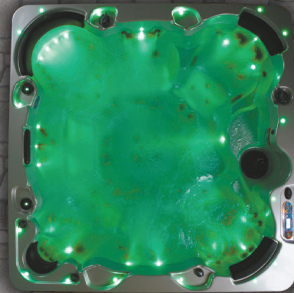
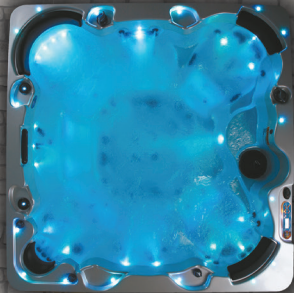
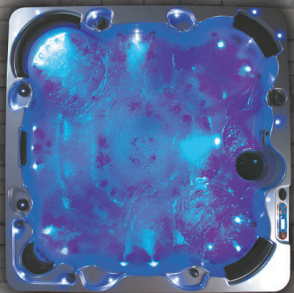


Your home is a place of many occasions; it is where you unwind, socialize with friends and family, spend time with your significant other, and entertain guests. A QCA Spa flawlessly contributes entertainment and excitement to all of these occasions. Spend a night soaking in each seat, letting the jets swirl around you, immerse in the warm water while chatting with close friends or family, get cozy with your spouse, or host a party and be the center of attention. Whatever the occasion, a QCA Spa is sure to make a statement.

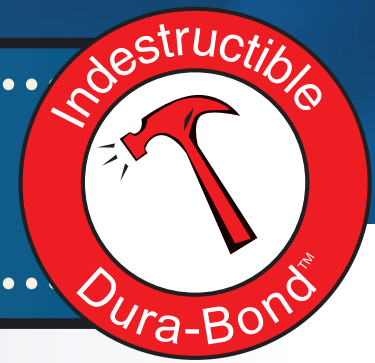


Seasonal
SPECIALTY STORES

Must-Have Spa Features To Look For



Spa Shell Strength & Appearance



Dependable Durability

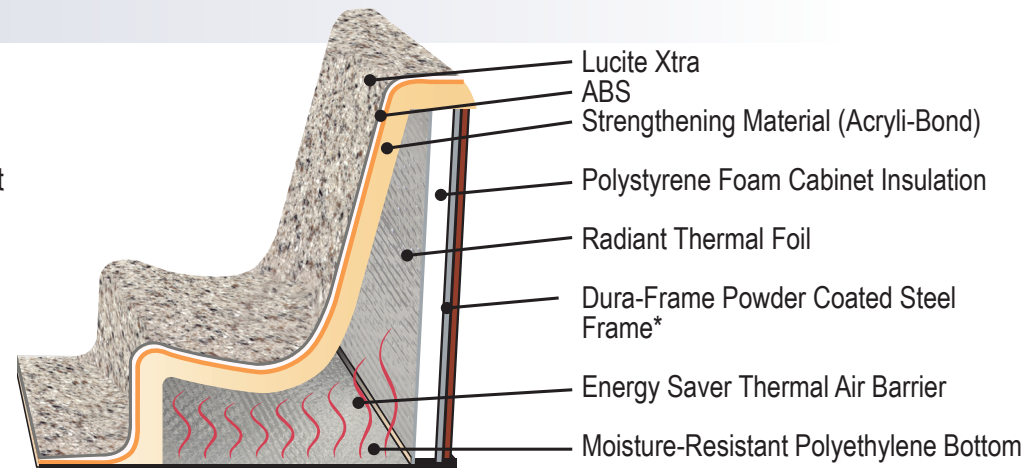
Most spas look great in the showroom, but how will it look in a few months - or years? It is extremely important to consider the material used in a spa's shell, especially if it is going to be kept outdoors.

Dura-Bond™

This three-layer, patented strengthening process combines the Lucite Plus Acrylic™ with a layer of ABS for shell strength and integrity. Then a double strengthening material is applied. This high density material has all the strengthening properties of fiberglass without the environmental concerns. The cabinet is insulated with a thick layer of polystyrene foam with radiant foil on the inside wall of foam and on the floor.

Lucite-Xtra Acrylic Sheet™

Lucite-Xtra™ cast acrylic is a non-porous material that resists stains like the build-up of lotions and body oils, which can ruin non-acrylic spas. This tough material keeps its shine despite sanitizing chemicals, high temperatures, and exposure to sunlight. Its durable surface resists chipping, cracking and denting. Lucite-Xtra™ is easily maintained with a sponge and mild soap. No additional polishing or waxing is needed to keep its lustrous appearance.

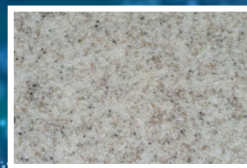


*Depending on the spa model it may have either a steel Dura-Frame™ steel frame or a Classic Wood Frame.

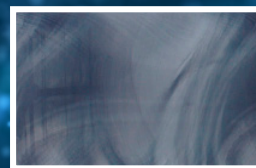
Spa Shell Color Choices



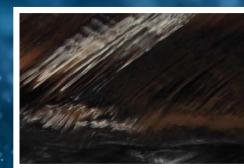
Silver Marble



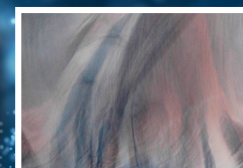
Sierra



Storm
Clouds



Midnight
Canyon



Tuscan Sun

PLEASE NOTE: SOME SHELL COLORS NOT AVAILABLE ON ALL SPA MODELS.



Quality Components

QCA Spa control systems are the most advanced controls in the industry. By utilizing Balboa's patented software and design with state of the art materials, Balboa's M-7 technology provides you with a more reliable heating and control system.

Smart Sensor Technology

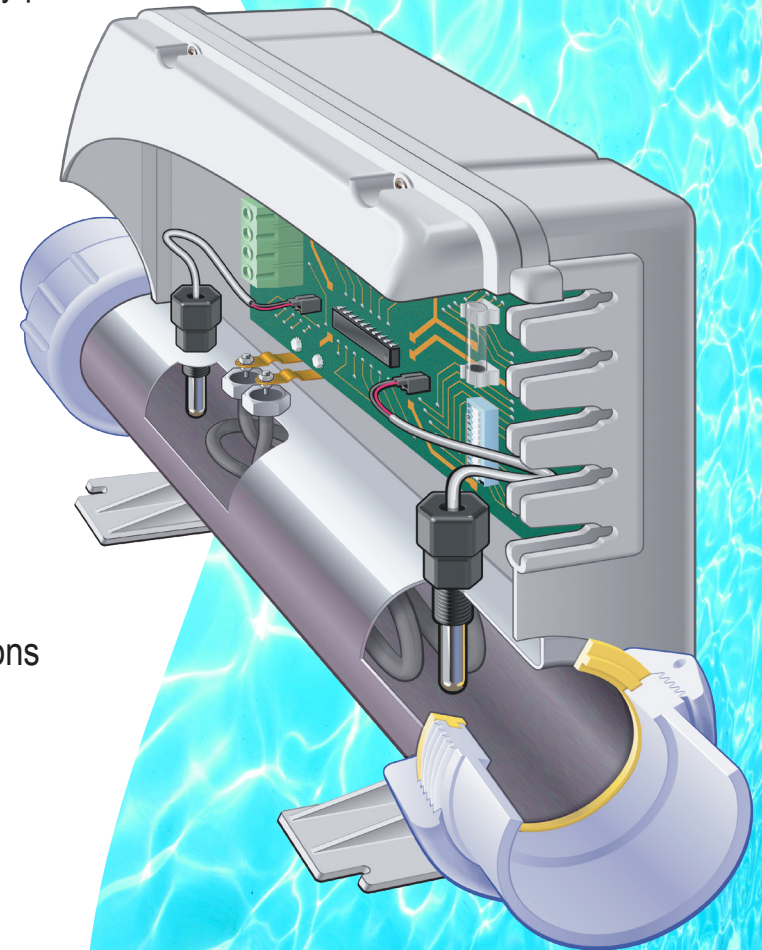
- Sensors monitor each other via software to regulate spa functions (water flow, temperature)
- Assures a proper operating environment for the heating element
- Multiple high-limit safety systems
- All safety functions are always active
- Eliminates excessive cycling
- Detects flow restrictions such as a dirty filter
- Minimizes calcium build-up on the element

Soft Touch™ Controls

Our state-of-the-art Soft Touch™ spa side control puts you in charge. All functions are conveniently located at your fingertips.



Balboa BP800 Topside

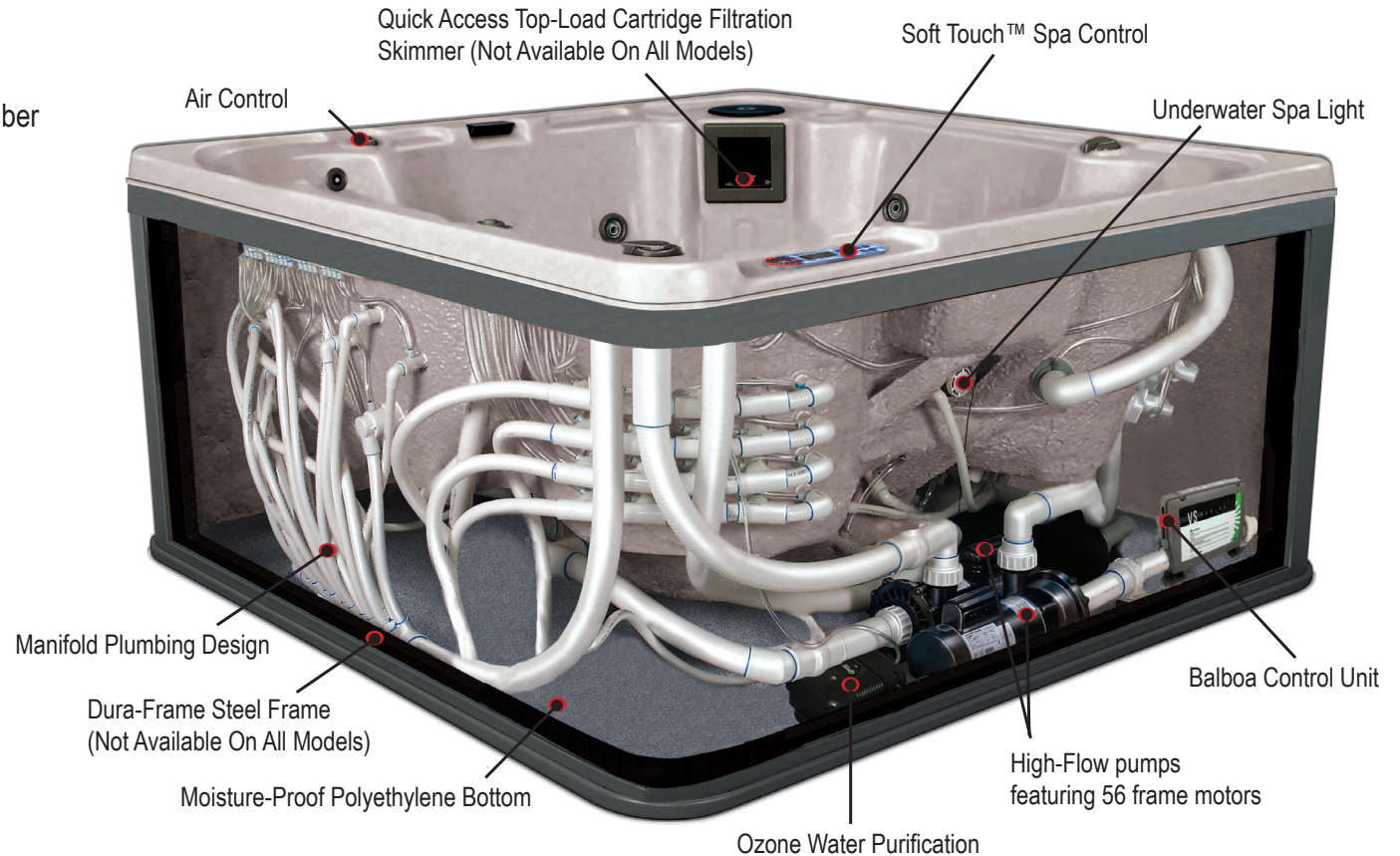


Maximum Performance & Water Flow

Manifold Plumbing

Our manifold plumbing is designed to balance water pressure distribution and reduce the number of plumbing joints to maximize water flow.

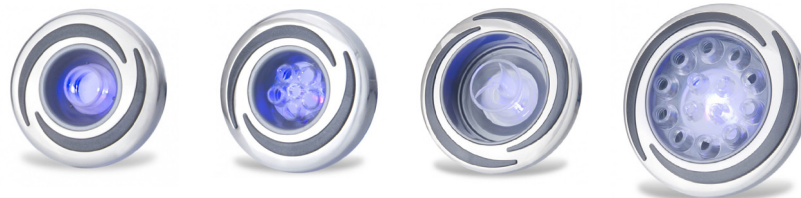
Air Control into jets allows the user to customize jet massage



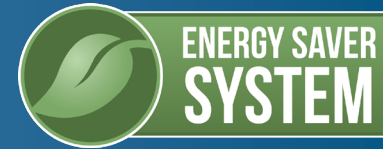
Jet Action

Designed and built exclusively for QCA Spas, our jets are positioned for optimum performance. Settings range from power surge, which creates a lively swirling action, to direct-pressure flow, which delivers a narrower stream for more intense therapy on a specific area of the body.

Interchangeable Stainless Steel Jets



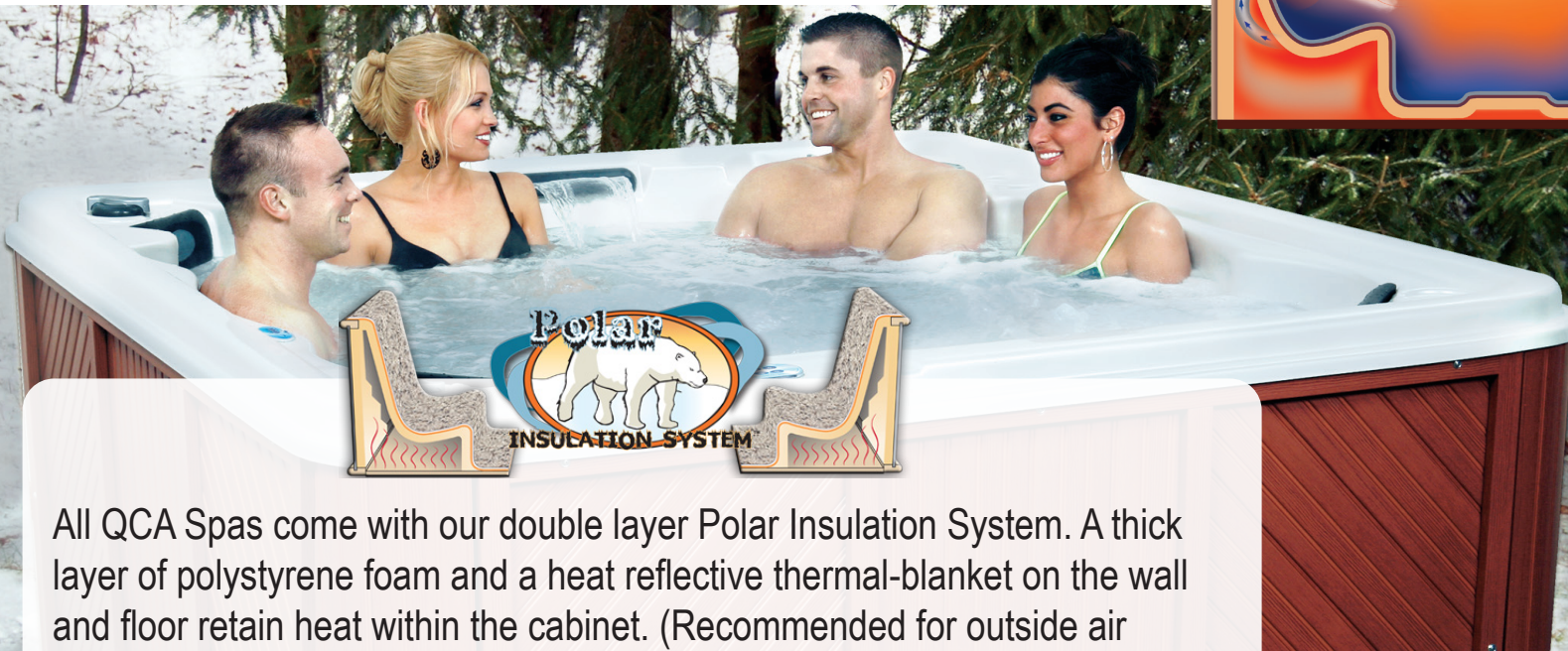
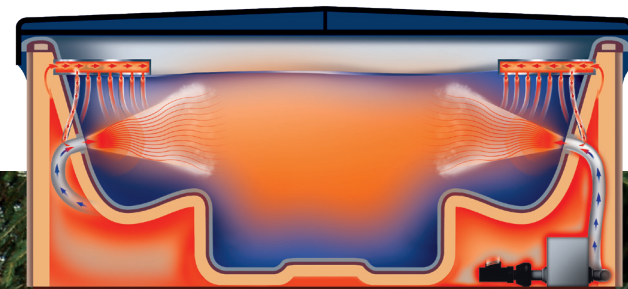
Energy Saver System



Heat produced by the spa's mechanical equipment is not vented away in a QCA Spa, it is secured and reused. As water moves through the lines toward the jets, it draws air (called venturi) in with it. This heated air is taken from the space within the insulated cabinet. Not only is warm air recycled and used to warm the water in your spa, but it also helps maintain the water temperature - saving you energy and money!

Insulation

QCA Spas are made to withstand cold winters. Our system incorporates a polystyrene foamed insulated cabinet and a thick layer of Acryli-Bond applied to the shell. The ambient air between these two layers of foam in the cabinet provides a high insulation barrier to maintain spa water temperature.



All QCA Spas come with our double layer Polar Insulation System. A thick layer of polystyrene foam and a heat reflective thermal-blanket on the wall and floor retain heat within the cabinet. (Recommended for outside air temperatures below +10° F.)



Maintenance-Free Cabinet and Frame

Maintenance-Free Weather Guard™ Cabinet

All QCA Spas feature our patented, maintenance-free Weather Guard™ cabinets. The cabinet panels are made from the finest synthetic material with a natural wood grain appearance. These panels are known for their rich, beautiful appearance and long lasting durability. They feature fully removable access panels that make service a breeze.

Patented Dura-Frame™

Select models come with our patented Dura-Frame™ which features a patented bridge frame which is constructed of powder-coated, galvanized steel. It is maintenance-free and comes with a 10-year warranty for years of worry-free durability.

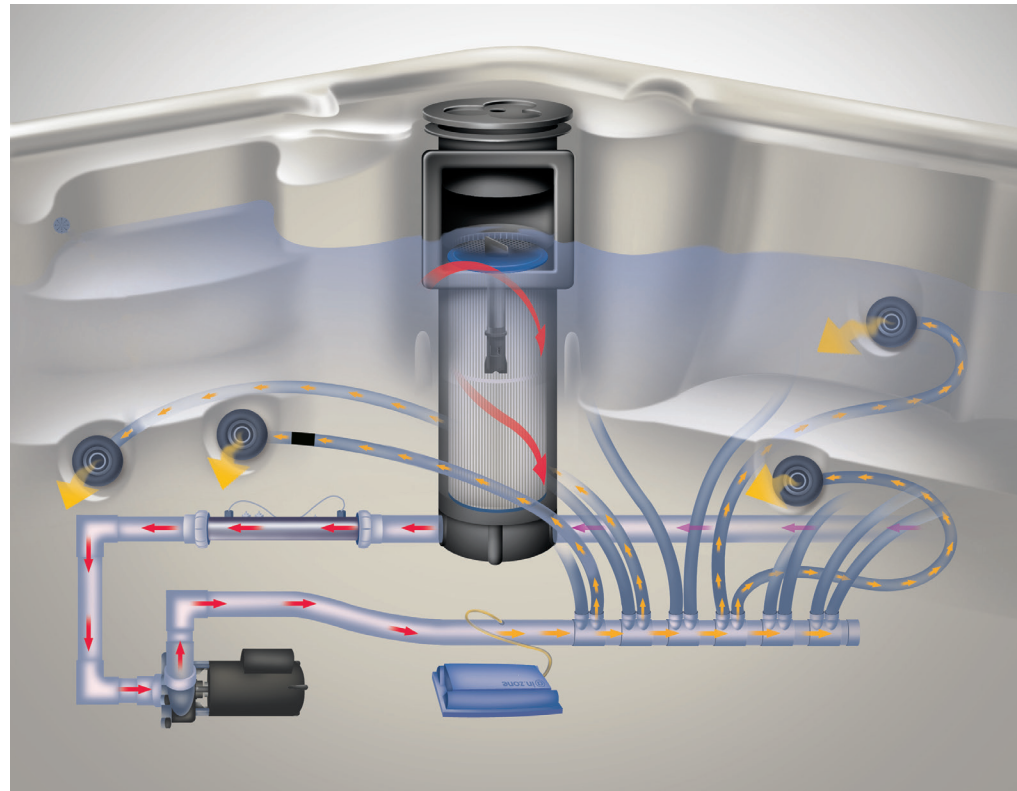


10-YEAR WARRANTY!



Quick & Simple Water Maintenance

- 1** 45 square foot filters are capable of filtering a 15,000 gallon swimming pool and can easily filter out dirt and organic waste from a 500 gallon spa.
- 2** The built-in chemical dispenser automatically dispenses the correct amount of sanitizer into your spa water. (Not available on all models)
- 3** The in-line heater with smart sensor technology regulates water flow and water temperature for effective sanitation and spa safety.
- 4** The Hi-Flow pumps are capable of cycling 500 gallons of spa water through the sanitation system in as little as two minutes.



- 5** The corona discharge ozone unit (sold separately) is activated during the filtration cycles and heating cycles. Ozone sanitizer is injected directly into the spa water and distributed throughout the entire spa.



Top Load Filter
All QCA Spas have top load filtering systems. Top load filtering systems are easy to remove for cleaning.

Quality Assurance Warranty

Rest Assured

Each and every QCA Spa goes through a 50 point inspection and fully-filled testing process with 104 degree water to assure you that your spa will perform flawlessly when it is delivered and for years to come.



Frequently Asked Questions

Which QCA Spa is right for me?

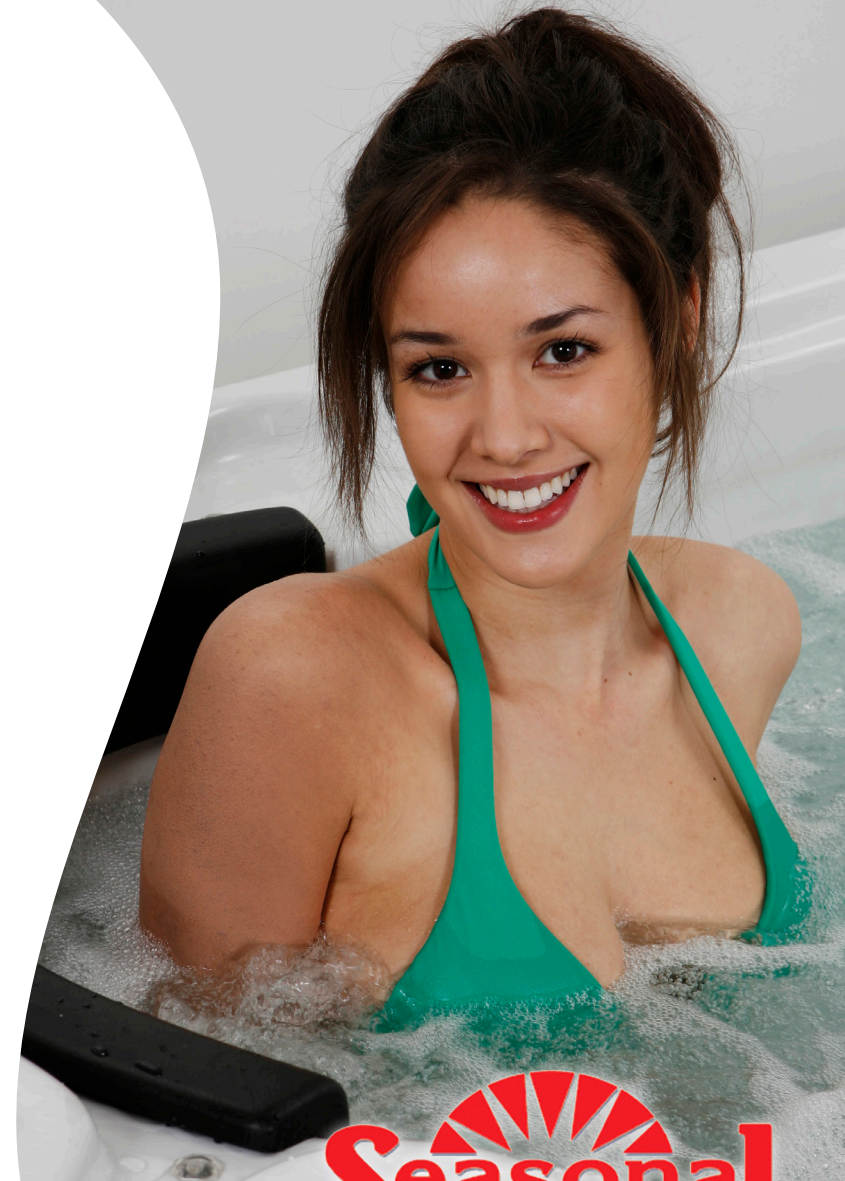
Spa dimensions, seating capacity, and number of jets vary. Ask yourself these questions when deciding on your spa model:

- Will my spa be located inside or outside?
- How much space do I have available for a spa? (This means the size of the room it will be placed in, or the size of the deck or patio it will be placed on.)
- How many people do I want my spa to seat comfortably?
- Do I want a spa with a lounger or without a lounger?
- How much hydrotherapy do I need?

Do I need a plumber or electrician?

No plumbing is required; your QCA Spa is entirely self-contained. Fill the spa using a garden hose.

You will need an electrician to install the 240-volt wire (not included) and a 50 or 60 amp, neutrally protected GFCI, or Ground Fault Circuit Interrupter (not included.) Your main breaker box will also need to have a 50 or 60 amp breaker. Your spa is hard-wired through the floor or side wall directly to the spa's control pack, so there are no plug-in cords. The "Plug and Play" spa series do not require an electrician to install, these all plug into a standard 120 volt/15 amp outlet, and feature a built in GFCI for safety.



Frequently Asked Questions

Where should I install my spa?

Indoors or outdoors. QCA Spas are fully insulated and built to withstand cold climates.

Outdoor Spa Placement

Outdoor spa placement on a flat concrete patio is recommended. However, the spa can be placed on any solid, uniform, level surface. **DO NOT** place your spa on bare ground.

New concrete patios must be a 4" minimum depth with reinforced wire placed in the concrete. We do not recommend placing your spa on brick, patio blocks, pavers, stone, or a gravel base. **DO NOT** place your spa on bare ground!

Indoor Spa Placement

For indoor spa placement, any level, code-compliant floor or basement concrete are adequate to support the weight. Due to the high humidity from the spa, you will need to install a ventilation fan.



Frequently Asked Questions

How much maintenance does a spa require?

QCA Spas have an automatic filtering cycle pre-programmed in the spa's control pack. All QCA Spas are ozone ready. An ozonator injects ozone into the water during the filtration cycle to kill bacteria and reduce chemical usage.

Regular Spa Maintenance Includes:

- Testing the water for proper sanitizer, pH, and alkaline levels.
- "Shocking" the spa water with a non-chlorine shock once or twice weekly, depending on usage.
- Rinsing the spa filter using a hose twice per month. If you prefer to use a cleaner, simply spray it on and hose it off.
- Once a month, soak the spa filter overnight in a bucket of water with filter cleaner and hose it off the next morning.
- Drain the spa every 3 months, once a season or 4 times a year.
Wipe down the spa's inside acrylic with a non-porous acrylic cleaner. Refill with clean, fresh water using a garden hose.
- Every other time you drain the spa, run a bottle of Jet and Line cleaner through the system as directed on the bottle, BEFORE draining the spa.

DO NOT use water from a water softener (softened water) in your spa!



Frequently Asked Questions

What safety measures should I be aware of?

- Never keep your spa above 104 °F/40 °C. Higher temperatures can cause health problems and damage the spa.
- After fifteen minutes in water temperatures above 98.6°F, you should lift your upper body out of the water to cool down.
- Alcohol consumption should be avoided when using a hot-water spa.
- Shower before and after use of spa.
- Children should never use a spa without adult supervision.
- Consult with your doctor before using any spa if you are currently using any medication or have chronic health problems.
- If you have high blood pressure, cardiovascular conditions, or are pregnant, consult a doctor before spa use.
- Always maintain a pH level of 7.2 to 7.6 with bromine or chlorine.



Frequently Asked Questions

What is the best insulation for your spa?

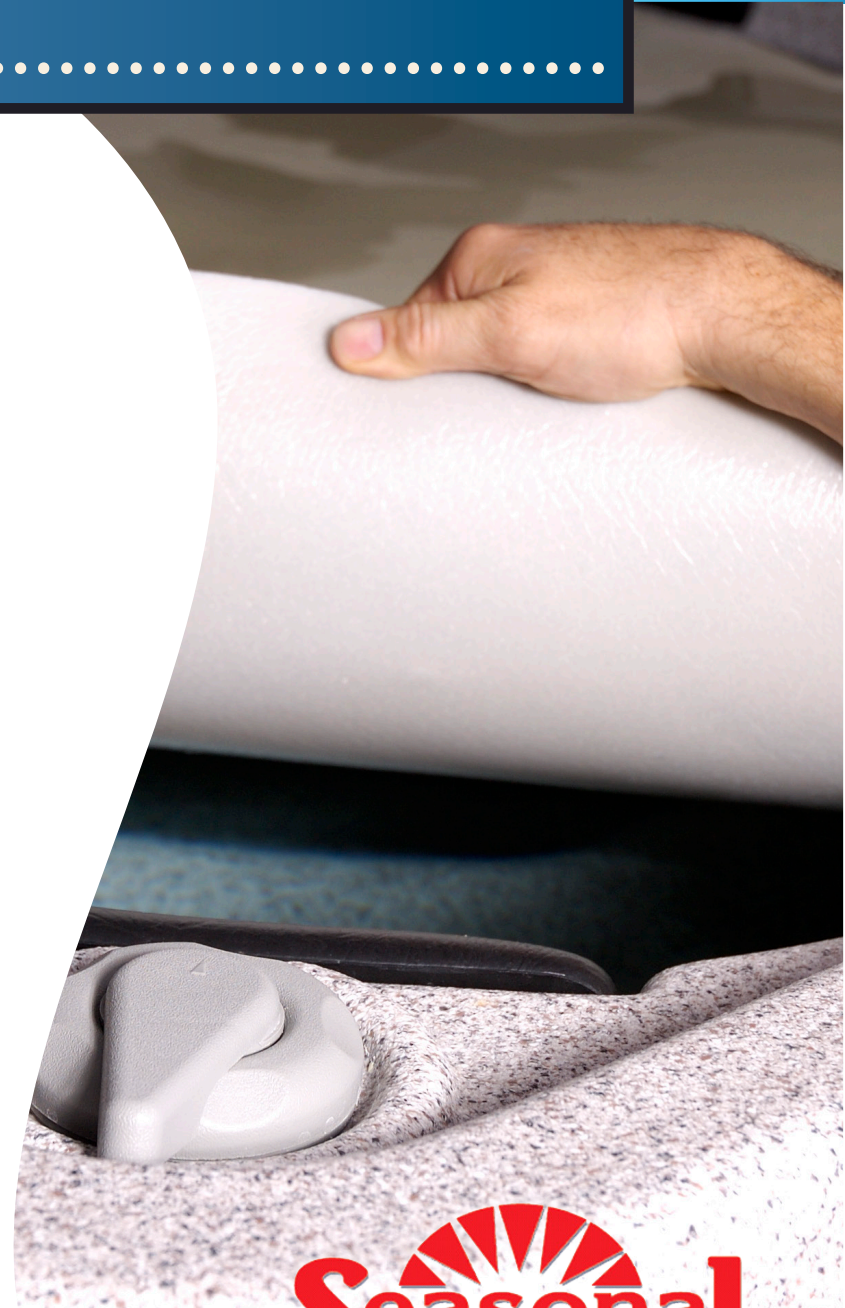
While full foam is good insulation, it restricts the access to jets and plumbing for service. Heat generated by mechanical equipment in a full-foam insulated spa must be vented away to prevent overheating.

QCA Spas contain two layers of insulation, one layer on the shell's exterior and another inside the cabinet. Heat generated by the mechanical equipment forms an ambient air barrier between the layers of insulation for minimized heat loss from the cabinet.

QCA Spas are more energy efficient than full-foam. Generated warm air is captured through venturi and redistributed by air tubes back to the spa jets. This process helps to heat the spa water and electric heater runs less. This exclusive Energy Saver System saves energy and money!

80% of the heat loss from a spa occurs at the top (the water surface). A four inch, thick hard cover for your spa dramatically reduces heat loss. Select QCA models include a hard cover in addition to the Energy Saver System for even more efficiency.

For greater insulation: QCA Spas recommends using a Soft Top™ that sits directly on the spa water surface and underneath the hard cover to prevent water and chemical build up on the hard cover and increase heat retention of the spa water



Notes:

Notes:

Seasonal SPECIALTY STORES®

113 Washington Street | Foxboro, MA 02035 | PH: 508.543.7112

Info@seasonalspecialtystores.com | www.seasonalspecialtystores.com

